

NEW CORRELATIONS FOR FRICTION FACTOR AND NUSSELT NUMBER PREDICTION FOR LAMINAR FLOW IN A CIRCULAR DUCT HAVING ONLY TRANSVERSE RIBS & ONLY TWISTED TAPES WITH OBLIQUE TEETH

Sujoy Kumar Saha

*Mechanical Engineering Department, Indian Institute of Engineering Science and Technology,
Shibpur, Howrah (India)*

ABSTRACT

The experimental friction factor and Nusselt number data for laminar flow through a circular duct having only transverse ribs and only twisted tapes with oblique teeth have been correlated by new predictive correlations. The major findings of the experimental investigation and subsequent development of correlations are that these inserts are useful for practical applications in heat exchangers used in chemical plants and the correlations predict data satisfactorily well within the permissible industrial limits.

Keywords: *Laminar Flow, Forced Convection, Transverse ribs, Twisted Tapes, Oblique Teeth, Swirl Flow*

I. INTRODUCTION

Passive heat transfer techniques like transverse ribs and twisted tapes with oblique teeth, as shown in Figure 1 and Figure 2, are used to mix the gross flow effectively in laminar flow to reduce the thermal resistance in the core flow through the channel. Edwards and Sheriff [1] and Emerson [2] worked with heat transfer enhancement in pipe flow. Uttawar and Raja Rao [3, 4] carried out experiments with seven different wire coil inserts.

Variants of twisted-tape [5-7] have been used.

Laminar flow friction factor and Nusselt number correlations for only transverse ribs and only twisted tapes in circular ducts have been developed from experimental data [8] and these are presented here.

2. Experimental Set-Up, Operating Procedure and Data Reduction

The heat transfer and pressure drop measurements were taken in nine test sections, three each with 13 mm, 16 mm

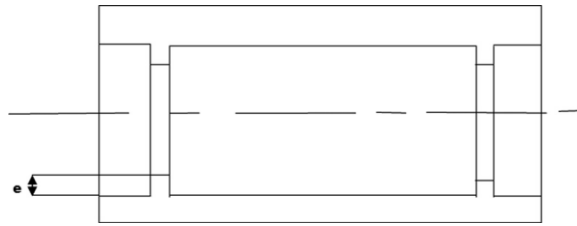


Figure 1: Transverse Ribs

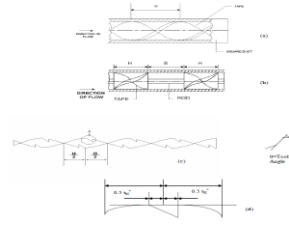


Figure 2: Twisted Tape with and without Oblique Teeth

and 19 mm ID brass tubes. All nine tubes had 1 mm thickness and 2m length. Figure 3 shows the self-explanatory experimental rig. The usual fabrication method of the test section and test set-up, the operating procedure and data reduction method have been described well in [8]. Servotherm medium oil of Indian Oil Corporation was used as the working fluid. Thermocouples were installed on the duct outside wall by brazing. Duct inside wall temperatures were evaluated by calculating duct-wall temperature drop from the one-dimensional radial heat conduction equation. Peripherally local temperatures in an axial station were arithmetically averaged to get axially local temperature and Nusselt number. Then axially local Nusselt numbers were averaged by trapezoidal rule. Fanning Friction factor evaluated. Experimental uncertainty was determined by the method of Kline and McClintock [9].

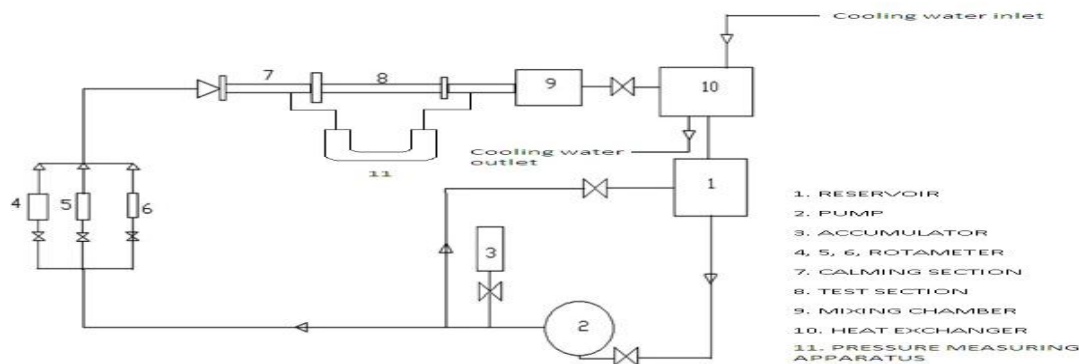


Figure 3: Experimental Set-Up

Further details of the experimental work and the experimental data may be obtained from [8].

3. Correlations

The correlations for Nusselt number and friction factor have been developed by log-linear regression analysis. Correlation for Nusselt number for combined transverse ribs and twisted-tape with oblique teeth in basic format is given by:

$$Nu = 4.172 Gz^{c_1} \left(\frac{Re}{\sqrt{y}}\right)^{c_2} Pr^{c_3} Gr^{c_4} \left(\frac{\mu_b}{\mu_w}\right)^{0.14} t_{hl}^{c_5} (\sin\theta)^{c_6} \left(\frac{p}{e}\right)^{c_7} \left(\frac{e}{D}\right)^{c_8}$$

Where the constants are to be determined by log-linear regression analysis as follows:

$$\ln Nu = c_1 \ln Gz + c_2 \ln \left(\frac{Re}{\sqrt{y}}\right) + c_3 \ln Pr + c_4 \ln Gr + c_5 \ln t_{hl} + c_6 \ln \sin\theta + c_7 \ln \left(\frac{p}{e}\right) + c_8 \ln \left(\frac{e}{D}\right)$$

$$\sum_{i=1}^N \left(c_1 \ln Gz + c_2 \ln \left(\frac{Re}{\sqrt{y}}\right) + c_3 \ln Pr + c_4 \ln Gr + c_5 \ln t_{hl} + c_6 \ln \sin\theta + c_7 \ln \left(\frac{p}{e}\right) + c_8 \ln \left(\frac{e}{D}\right) - \ln Nu \right)_i^2 = 0$$

$$\sum_{i=1}^N \left(c_1 \ln Gz + c_2 \ln \left(\frac{Re}{\sqrt{y}} \right) + c_3 \ln Pr + c_4 \ln Gr + c_5 \ln t_{hi} + c_6 \ln \sin \theta + c_7 \ln \left(\frac{p}{e} \right) + c_8 \ln \left(\frac{e}{D} \right) - \ln Nu \right) \ln Gz = 0$$

$$\sum_{i=1}^N c_1 \ln Gz \ln Gz + \sum_{i=1}^N c_2 \ln \left(\frac{Re}{\sqrt{y}} \right) \ln Gz + \sum_{i=1}^N c_3 \ln Pr \ln Gz + \sum_{i=1}^N c_4 \ln Gr \ln Gz + \sum_{i=1}^N c_5 \ln t_{hi} \ln Gz + \sum_{i=1}^N c_6 \ln \sin \theta \ln Gz + \sum_{i=1}^N c_7 \ln \left(\frac{p}{e} \right) \ln Gz + \sum_{i=1}^N c_8 \ln \left(\frac{e}{D} \right) \ln Gz = \sum_{i=1}^N \ln Nu \ln Gz$$

$$\sum_{i=1}^N c_1 \ln Gz \ln \left(\frac{Re}{\sqrt{y}} \right) + \sum_{i=1}^N c_2 \ln \left(\frac{Re}{\sqrt{y}} \right) \ln \left(\frac{Re}{\sqrt{y}} \right) + \sum_{i=1}^N c_3 \ln Pr \ln \left(\frac{Re}{\sqrt{y}} \right) + \sum_{i=1}^N c_4 \ln Gr \ln \left(\frac{Re}{\sqrt{y}} \right) + \sum_{i=1}^N c_5 \ln t_{hi} \ln \left(\frac{Re}{\sqrt{y}} \right) + \sum_{i=1}^N c_6 \ln \sin \theta \ln \left(\frac{Re}{\sqrt{y}} \right) + \sum_{i=1}^N c_7 \ln \left(\frac{p}{e} \right) \ln \left(\frac{Re}{\sqrt{y}} \right) + \sum_{i=1}^N c_8 \ln \left(\frac{e}{D} \right) \ln \left(\frac{Re}{\sqrt{y}} \right) = \sum_{i=1}^N \ln Nu \ln \left(\frac{Re}{\sqrt{y}} \right)$$

$$\sum_{i=1}^N c_1 \ln Gz \ln Pr + \sum_{i=1}^N c_2 \ln \left(\frac{Re}{\sqrt{y}} \right) \ln Pr + \sum_{i=1}^N c_3 \ln Pr \ln Pr + \sum_{i=1}^N c_4 \ln Gr \ln Pr + \sum_{i=1}^N c_5 \ln t_{hi} \ln Pr + \sum_{i=1}^N c_6 \ln \sin \theta \ln Pr + \sum_{i=1}^N c_7 \ln \left(\frac{p}{e} \right) \ln Pr + \sum_{i=1}^N c_8 \ln \left(\frac{e}{D} \right) \ln Pr = \sum_{i=1}^N \ln Nu \ln Pr$$

$$\sum_{i=1}^N c_1 \ln Gz \ln Gr + \sum_{i=1}^N c_2 \ln \left(\frac{Re}{\sqrt{y}} \right) \ln Gr + \sum_{i=1}^N c_3 \ln Pr \ln Gr + \sum_{i=1}^N c_4 (\ln Gr)^2 + \sum_{i=1}^N c_5 \ln t_{hi} \ln Gr + \sum_{i=1}^N c_6 \ln \sin \theta \ln Gr + \sum_{i=1}^N c_7 \ln \left(\frac{p}{e} \right) \ln Gr + \sum_{i=1}^N c_8 \ln \left(\frac{e}{D} \right) \ln Gr = \sum_{i=1}^N \ln Nu \ln Gr$$

$$\sum_{i=1}^N c_1 \ln Gz \ln t_{hi} + \sum_{i=1}^N c_2 \ln \left(\frac{Re}{\sqrt{y}} \right) \ln t_{hi} + \sum_{i=1}^N c_3 \ln Pr \ln t_{hi} + \sum_{i=1}^N c_4 \ln Gr \ln t_{hi} + \sum_{i=1}^N c_5 \ln t_{hi} \ln t_{hi} + \sum_{i=1}^N c_6 \ln \sin \theta \ln t_{hi} + \sum_{i=1}^N c_7 \ln \left(\frac{p}{e} \right) \ln t_{hi} + \sum_{i=1}^N c_8 \ln \left(\frac{e}{D} \right) \ln t_{hi} = \sum_{i=1}^N \ln Nu \ln t_{hi}$$

$$\sum_{i=1}^N c_1 \ln Gz \ln \sin \theta + \sum_{i=1}^N c_2 \ln \left(\frac{Re}{\sqrt{y}} \right) \ln \sin \theta + \sum_{i=1}^N c_3 \ln Pr \ln \sin \theta + \sum_{i=1}^N c_4 \ln Gr \ln \sin \theta + \sum_{i=1}^N c_5 \ln t_{hi} \ln \sin \theta + \sum_{i=1}^N c_6 \ln \sin \theta \ln \sin \theta + \sum_{i=1}^N c_7 \ln \left(\frac{p}{e} \right) \ln \sin \theta + \sum_{i=1}^N c_8 \ln \left(\frac{e}{D} \right) \ln \sin \theta = \sum_{i=1}^N \ln Nu \ln \sin \theta$$

$$\sum_{i=1}^N c_1 \ln Gz \ln \left(\frac{p}{e} \right) + \sum_{i=1}^N c_2 \ln \left(\frac{Re}{\sqrt{y}} \right) \ln \left(\frac{p}{e} \right) + \sum_{i=1}^N c_3 \ln Pr \ln \left(\frac{p}{e} \right) + \sum_{i=1}^N c_4 \ln Gr \ln \left(\frac{p}{e} \right) + \sum_{i=1}^N c_5 \ln t_{hi} \ln \left(\frac{p}{e} \right) + \sum_{i=1}^N c_6 \ln \sin \theta \ln \left(\frac{p}{e} \right) + \sum_{i=1}^N c_7 \ln \sin \alpha \ln \left(\frac{p}{e} \right) + \sum_{i=1}^N c_8 \ln \left(\frac{e}{D} \right) \ln \left(\frac{p}{e} \right) = \sum_{i=1}^N \ln Nu \ln \left(\frac{p}{e} \right)$$

$$\sum_{i=1}^N c_1 \ln Gz \ln \left(\frac{e}{D} \right) + \sum_{i=1}^N c_2 \ln \left(\frac{Re}{\sqrt{y}} \right) \ln \left(\frac{e}{D} \right) + \sum_{i=1}^N c_3 \ln Pr \ln \left(\frac{e}{D} \right) + \sum_{i=1}^N c_4 \ln Gr \ln \left(\frac{e}{D} \right) + \sum_{i=1}^N c_5 \ln t_{hi} \ln \left(\frac{e}{D} \right) + \sum_{i=1}^N c_6 \ln \sin \theta \ln \left(\frac{e}{D} \right) + \sum_{i=1}^N c_7 \ln \left(\frac{p}{e} \right) \ln \left(\frac{e}{D} \right) + \sum_{i=1}^N c_8 \ln h_c \ln \left(\frac{e}{D} \right) = \sum_{i=1}^N \ln Nu \ln \left(\frac{e}{D} \right)$$

(5.5)

$$\Delta = \begin{pmatrix} \sum_{i=1}^N (\ln Gz)^2 & \sum_{i=1}^N \ln \left(\frac{Re}{\sqrt{y}}\right) \ln Gz & \sum_{i=1}^N \ln Pr \ln Gz & \sum_{i=1}^N \ln Gr \ln Gz & \sum_{i=1}^N \ln t_{hl} \ln Gz & \sum_{i=1}^N \ln \sin \theta \ln Gz & \sum_{i=1}^N \ln \left(\frac{p}{e}\right) \ln Gz & \sum_{i=1}^N \ln \left(\frac{e}{D}\right) \ln Gz \\ \sum_{i=1}^N \ln Gz \ln \left(\frac{Re}{\sqrt{y}}\right) & \sum_{i=1}^N \left(\ln \left(\frac{Re}{\sqrt{y}}\right)\right)^2 & \sum_{i=1}^N \ln Pr \ln \left(\frac{Re}{\sqrt{y}}\right) & \sum_{i=1}^N \ln Gr \ln \left(\frac{Re}{\sqrt{y}}\right) & \sum_{i=1}^N \ln t_{hl} \ln \left(\frac{Re}{\sqrt{y}}\right) & \sum_{i=1}^N \ln \sin \theta \ln \left(\frac{Re}{\sqrt{y}}\right) & \sum_{i=1}^N \ln \left(\frac{p}{e}\right) \ln \left(\frac{Re}{\sqrt{y}}\right) & \sum_{i=1}^N \ln \left(\frac{e}{D}\right) \ln \left(\frac{Re}{\sqrt{y}}\right) \\ \sum_{i=1}^N \ln Gz \ln Pr & \sum_{i=1}^N \ln \left(\frac{Re}{\sqrt{y}}\right) \ln Pr & \sum_{i=1}^N (\ln Pr)^2 & \sum_{i=1}^N \ln Gr \ln Pr & \sum_{i=1}^N \ln t_{hl} \ln Pr & \sum_{i=1}^N \ln \sin \theta \ln Pr & \sum_{i=1}^N \ln \left(\frac{p}{e}\right) \ln Pr & \sum_{i=1}^N \ln \left(\frac{e}{D}\right) \ln Pr \\ \sum_{i=1}^N \ln Gz \ln Gr & \sum_{i=1}^N \ln \left(\frac{Re}{\sqrt{y}}\right) \ln Gr & \sum_{i=1}^N \ln Pr \ln Gr & \sum_{i=1}^N (\ln Gr)^2 & \sum_{i=1}^N \ln t_{hl} \ln Gr & \sum_{i=1}^N \ln \sin \theta \ln Gr & \sum_{i=1}^N \ln \left(\frac{p}{e}\right) \ln Gr & \sum_{i=1}^N \ln \left(\frac{e}{D}\right) \ln Gr \\ \sum_{i=1}^N \ln Gz \ln t_{hl} & \sum_{i=1}^N \ln \left(\frac{Re}{\sqrt{y}}\right) \ln t_{hl} & \sum_{i=1}^N \ln Pr \ln t_{hl} & \sum_{i=1}^N \ln Gr \ln t_{hl} & \sum_{i=1}^N (\ln t_{hl})^2 & \sum_{i=1}^N \ln \sin \theta \ln t_{hl} & \sum_{i=1}^N \ln \left(\frac{p}{e}\right) \ln t_{hl} & \sum_{i=1}^N \ln \left(\frac{e}{D}\right) \ln t_{hl} \\ \sum_{i=1}^N \ln Gz \ln \sin \theta & \sum_{i=1}^N \ln \left(\frac{Re}{\sqrt{y}}\right) \ln \sin \theta & \sum_{i=1}^N \ln Pr \ln \sin \theta & \sum_{i=1}^N \ln Gr \ln \sin \theta & \sum_{i=1}^N \ln t_{hl} \ln \sin \theta & \sum_{i=1}^N (\ln \sin \theta)^2 & \sum_{i=1}^N \ln \left(\frac{p}{e}\right) \ln \sin \theta & \sum_{i=1}^N \ln \left(\frac{e}{D}\right) \ln \sin \theta \\ \sum_{i=1}^N \ln Gz \ln \left(\frac{p}{e}\right) & \sum_{i=1}^N \ln \left(\frac{Re}{\sqrt{y}}\right) \ln \left(\frac{p}{e}\right) & \sum_{i=1}^N \ln Pr \ln \left(\frac{p}{e}\right) & \sum_{i=1}^N \ln Gr \ln \left(\frac{p}{e}\right) & \sum_{i=1}^N \ln t_{hl} \ln \left(\frac{p}{e}\right) & \sum_{i=1}^N \ln \sin \theta \ln \left(\frac{p}{e}\right) & \sum_{i=1}^N \left(\ln \left(\frac{p}{e}\right)\right)^2 & \sum_{i=1}^N \ln \left(\frac{e}{D}\right) \ln \left(\frac{p}{e}\right) \\ \sum_{i=1}^N \ln Gz \ln \left(\frac{e}{D}\right) & \sum_{i=1}^N \ln \left(\frac{Re}{\sqrt{y}}\right) \ln \left(\frac{e}{D}\right) & \sum_{i=1}^N \ln Pr \ln \left(\frac{e}{D}\right) & \sum_{i=1}^N \ln Gr \ln \left(\frac{e}{D}\right) & \sum_{i=1}^N \ln t_{hl} \ln \left(\frac{e}{D}\right) & \sum_{i=1}^N \ln \sin \theta \ln \left(\frac{e}{D}\right) & \sum_{i=1}^N \ln \left(\frac{p}{e}\right) \ln \left(\frac{e}{D}\right) & \sum_{i=1}^N \left(\ln \left(\frac{e}{D}\right)\right)^2 \end{pmatrix}^{-1}$$

$$B = \left(\sum_{i=1}^N \ln Nu \ln Gz \sum_{i=1}^N \ln Nu \ln \left(\frac{Re}{\sqrt{y}}\right) \sum_{i=1}^N \ln Nu \ln Pr \sum_{i=1}^N \ln Nu \ln Gr \sum_{i=1}^N \ln Nu \ln t_{hl} \sum_{i=1}^N \ln Nu \ln \sin \theta \sum_{i=1}^N \ln Nu \ln \left(\frac{p}{e}\right) \sum_{i=1}^N \ln Nu \ln \left(\frac{e}{D}\right) \right)^{-1}$$

For individual integral transverse ribs and twisted-tape with oblique teeth, friction factors are given by:

$$fRe_{OTR} = 23.4694 (Re)^{0.51175} \left(\frac{e}{D}\right)^{0.02237} \left(\frac{p}{e}\right)^{-0.5488}$$

$$fRe_{OTTWOT} = 64.1927 \left(\frac{Re}{\sqrt{y}}\right)^{0.26398} t_{hl}^{0.077255} (\sin \theta)^{0.26683}$$

The corresponding Nusselt number correlations are given by:

$$Nu_{OTR}$$

$$= 4.172 (Gz)^{0.13726} (Re)^{0.38929} (Pr)^{0.1274} (Gr)^{0.0818} \left(\frac{p}{e}\right)^{-0.65531} \left(\frac{e}{D}\right)^{0.077342} \left(\frac{\mu_b}{\mu_w}\right)^{0.14}$$

$$Nu_{OTTWOT} = 4.172 (Gz)^{0.00499} \left(\frac{Re}{\sqrt{y}}\right)^{0.3938} Pr^{0.1563} Gr^{0.02554} t_{hl}^{0.1689} (\sin \theta)^{0.10872} \left(\frac{\mu_b}{\mu_w}\right)^{0.14}$$

All correlations have been developed by log-linear regression analysis. The correlations predict most of the experimental data within ± 18 per cent.

IV. CONCLUSIONS

The experimental friction factor and Nusselt number data for laminar flow through a circular duct having only transverse ribs and only twisted tape with oblique teeth have been considered. Predictive friction factor and Nusselt number correlations have also been developed and presented. These correlations predict data satisfactorily. This research finding is useful in manufacturing better heat exchangers used in chemical industries.

REFERENCE

- [1.] Edwards, F. J. and Sheriff, N., 1961, The heat transfer and friction characteristics for forced convection air flow over a particular type of rough surface, International Developments in Heat Transfer, ASME, New York, pp. 415–425.

- [2.] Emerson, W. H., 1961, Heat transfer in a duct in regions of separated flow, in: Proceedings of the Second International Heat Transfer Conference, Colorado, USA, vol. 1, pp. 267–275.
- [3.] Uttawar, S. B. and Raja Rao, M., 1985, Augmentation of laminar flow heat transfer in tubes by means of wire coil inserts, *J Heat Transfer-Trans ASME*, 106, 467–469.
- [4.] Chen, L. and Zhang, H. J., 1993, Convection heat transfer enhancement of oil in a circular tube with spiral spring inserts, in: L.C. Chow, A.F. Emery (Eds.), *Heat Transfer Measurements and Analysis, HTD-ASME Symposium*, vol. 249, pp. 45–50.
- [5.] Date, A. W., 1974, Prediction of fully-developed flow in a tube containing a twisted-tape, *Int. J. Heat Mass Transfer*, 17, 845-859.
- [6.] Hong, S. W. and Bergles, A. E., 1976, Augmentation of laminar flow heat transfer in tubes by means of twisted-tape inserts, *ASME J. Heat Transfer*, 98, 251-256.
- [7.] Bhattacharyya, S. and Saha, S. K., 2012, Thermohydraulics of laminar flow through a circular tube having integral helical rib roughness and fitted with centre-cleared twisted-tape, *Exp. Thermal Fluid Science*, 42,154-162
- [8.] M. Tiwari and S. K. Saha, 2015, Thermohydraulics of Laminar Flow through a Circular Tube with Transverse Ribs and Twisted Tapes, *ASME J. Thermal Science and Engineering Applications*,7(4): 041009-041009-9:doi:10.1115/1.4030792.
- [9.] Kline, S. J. and McClintock, F. A. , (1953), Describing Uncertainties in Single Sample Experiments, *Mechanical Engineering*, 75 (1), pp 3-8.

Acknowledgments

The author gratefully acknowledges the generous financial support of the UGC and DST, Government of India for the current research; DST Grant No. SR/S3/MERC-0045/2010 and UGC Grant No. 41-989/2012(SR).